

THE DEL PRADO IN THE PARK





The wonderful, iconic Del Prado overlooking Balboa Park. Created by famed mid-century architect William Krisel, the building's distinction has been rewarded with historical designation and Mills Act property tax advantage.

Unit 505, on the coveted SW of the building, is nearly 1,800 square feet, three bedrooms, two baths, exposure on three sides with Balboa Park as your front yard.

This amenities rich complex enjoys a 24/7 attended lobby, beautiful party room with catering kitchen and park facing terrace, well equipped gym, cruise ship quality lending library, extra storage and two terrific guest suites.

Short distances to beaches, dining, theater, museums, the airport and all of San Diego's most desired locations. Don't miss this prestigious Landmark!





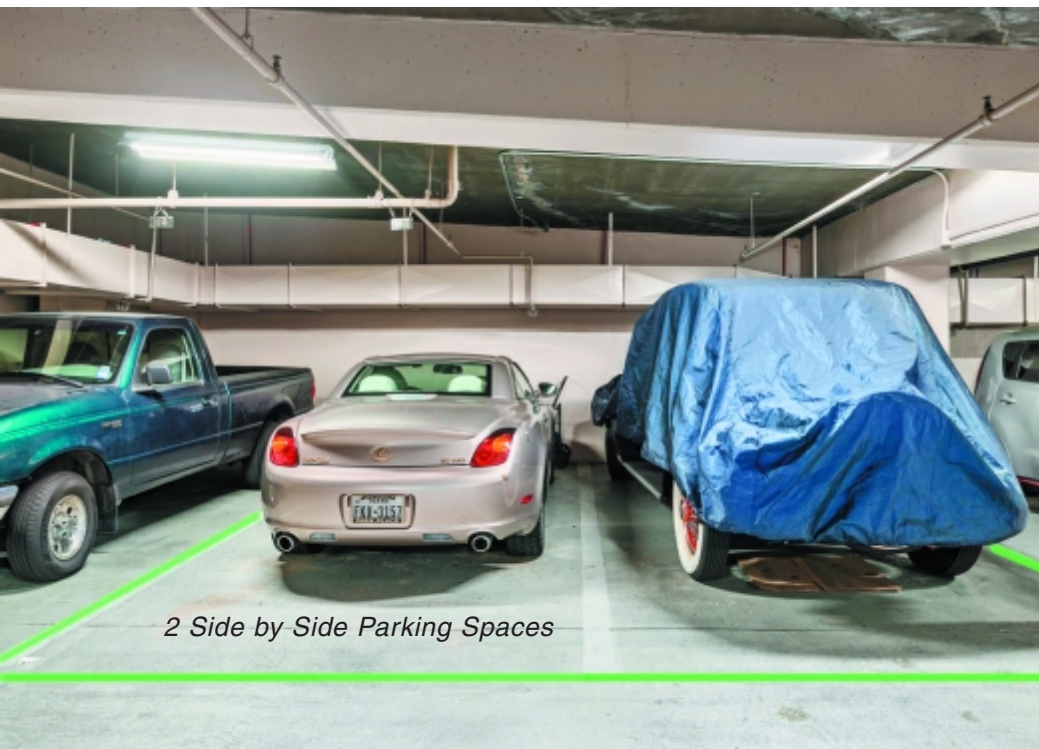
South West View From Balcony







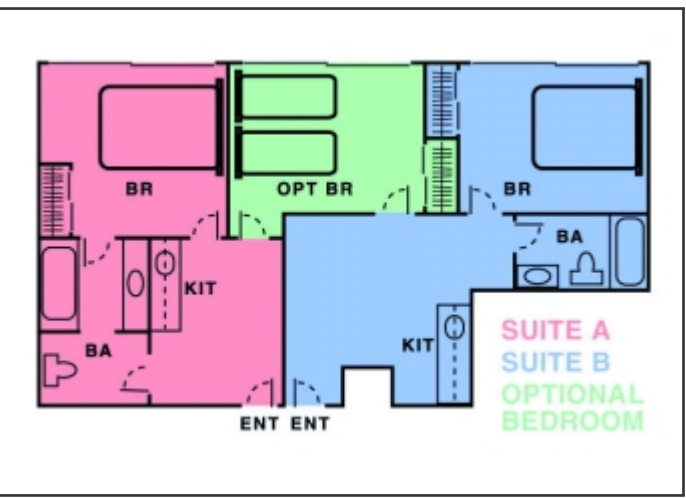
Master Walk-In Closet



2 Side by Side Parking Spaces

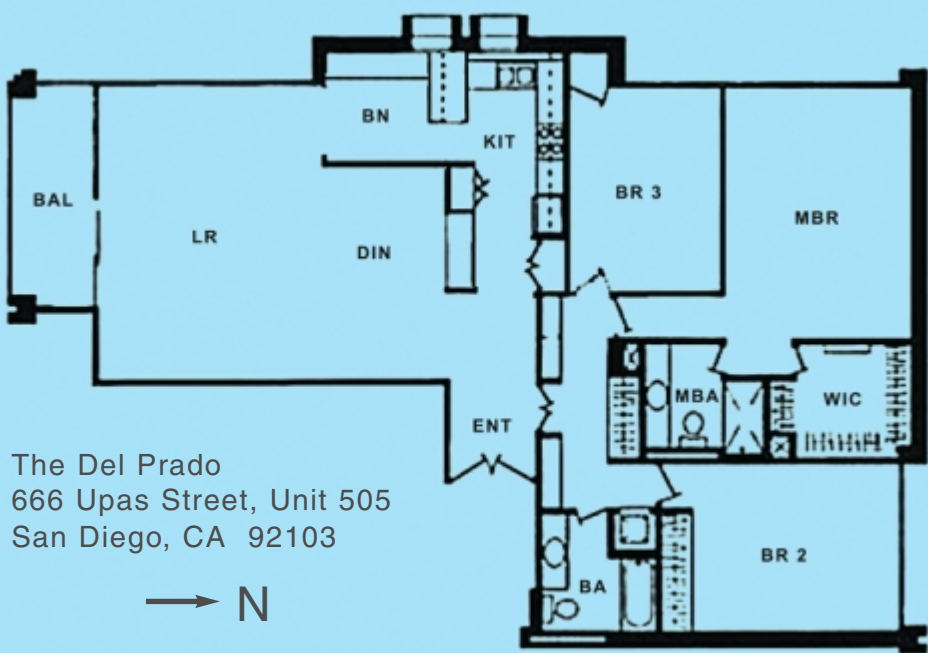


Storage Locker





TWO EXAMPLES of other “05” units with the same footprint as 505 that have been remodeled to an open floor plan. See more on my Del Prado website.



The Del Prado
666 Upas Street, Unit 505
San Diego, CA 92103



ADDITIONAL INFORMATION


CITY: San Diego LD: 2/22/23 STATUS: Active

GENERAL INFORMATION

APN: 452-430-27-09	Year Built: 1973	SF: 1,768	Unit Ent. Level: 5
Lot Size: Common Int.	# of Units: 66	Stories: 17	Roof: Composite
Exterior: Stucco	Cooling: Forced	Heat: Forced	Parking: 2 Spaces
Sewer: Connected	Balcony: Covered	Floors: Slab	Water: Meter on Prop
HOA Fee: \$1,185.00 mo.	Pets: W/Rest.	Source of SF: Assessor Record	

ROOMS INFORMATION

LR: 21 x 20 DIN: combo KIT: 16 x 12 MBR: 18 x 16 BR 2: 15 x 12 BR3: 14 x 8

Prepared by: Jim Greer Information is believed to be reliable, but not guaranteed. 

CONTACT AGENT:

Jim Greer (619) 985-1628

DRE #01240616

Jim@JimGreer.com

www.JimGreer.com



DRE #02205944

