







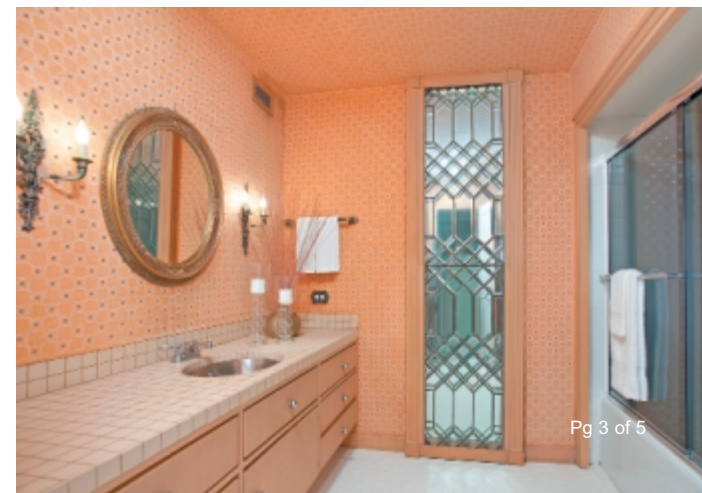
High above Balboa Park with active views of the harbor and the ocean beyond, this iconic building is arguably in the City's most desirable location. It's minutes by foot or car to much of San Diego's life style choices.

Del Prado remains a premium residence enjoying 24 hour a day lobby attendants, rich amenities including a very large gathering room and balcony, guest suites, a modern gym, storage lockers and spacious units.

Designed by famed architect William Krisel and carefully self-managed, the

Beautifully remodeled years ago, Unit 1102 is now ready for your re-imagining.

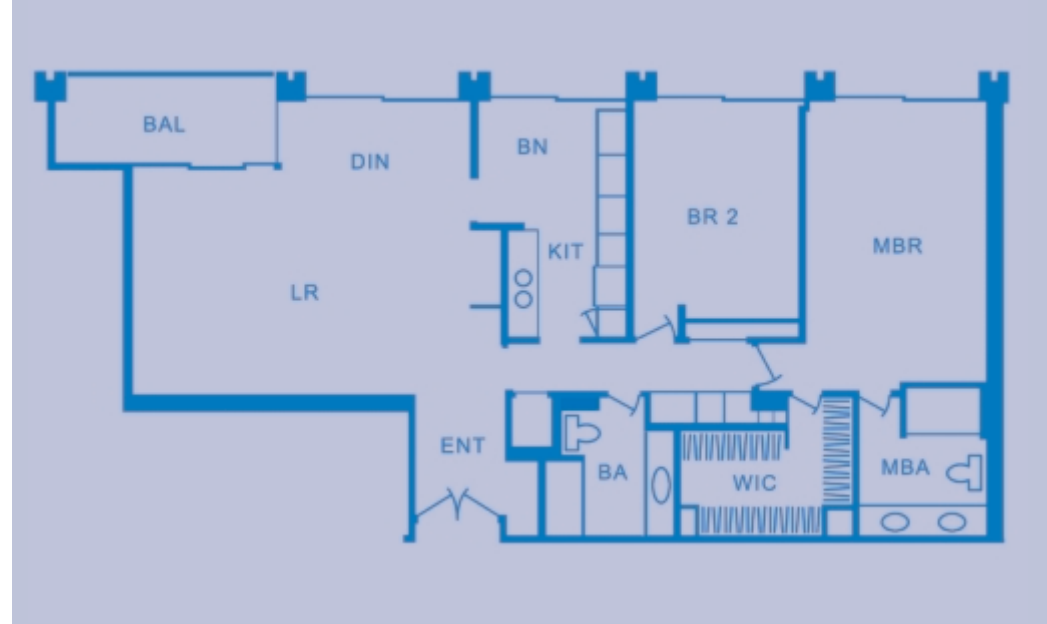












## Contact Agent

### Jim Greer

REALTOR<sup>®</sup> CaIBRE#01240616

**619.985.1628**

Jim@JimGreer.com

Visit [JimGreer.com](http://JimGreer.com) for more information.



#### ADDITIONAL INFORMATION

MLS: 160024244      LD: 5/5/16      Zip : 92103      Status: Active  
 Map Code: 1269 B6      Cross St: 6th Ave      Directions: 6th Ave to Upas St

#### GENERAL INFORMATION

APN: 452-430-27-37      SF: 1,395      Stories: 17      Year Built: 1973  
 Topography: Level      # of Units: 66      Unit Ent. Lvl: 11      Exterior: Stucco  
 Lot Size: Common Int.      Floors: Slab      Roof: Composite      Cooling: Forced  
 Water: Meter on Prop      Heat: Forced      Balcony: Covered      Sewer: Connected  
 Parking Gar: 2 Spaces      Pets: W/Rest.      HOA Fee: 763. mo.      Other Fee: 125. mo  
 Source of SF: Assessor Record

#### ROOMS INFORMATION

LR: 21 x 15      Din: 12 x 9      Kit: 16 x 10      MBR: 20 x 12      BR 2: 14 x 11

